

Omniflow™ II

The Biosynthetic Vascular Prosthesis

For peripheral revascularisation
and arteriovenous access



**Sustained
performance**



bio nova

www.bionova.com.au

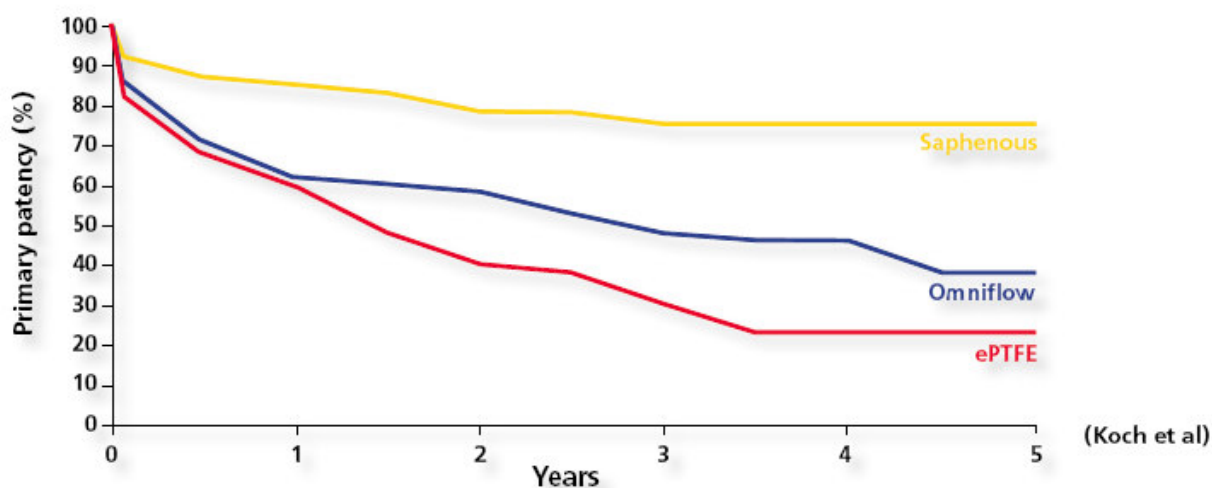
Omniflow™ II

Sustained Performance

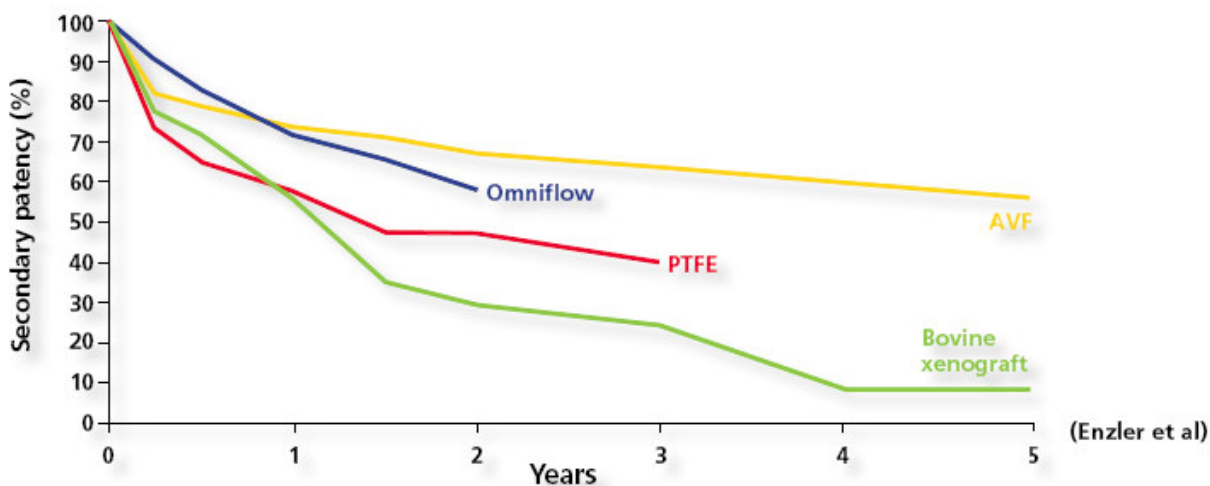


Long term patency

Patency rates with Omniflow in below-knee settings are statistically better than PTFE



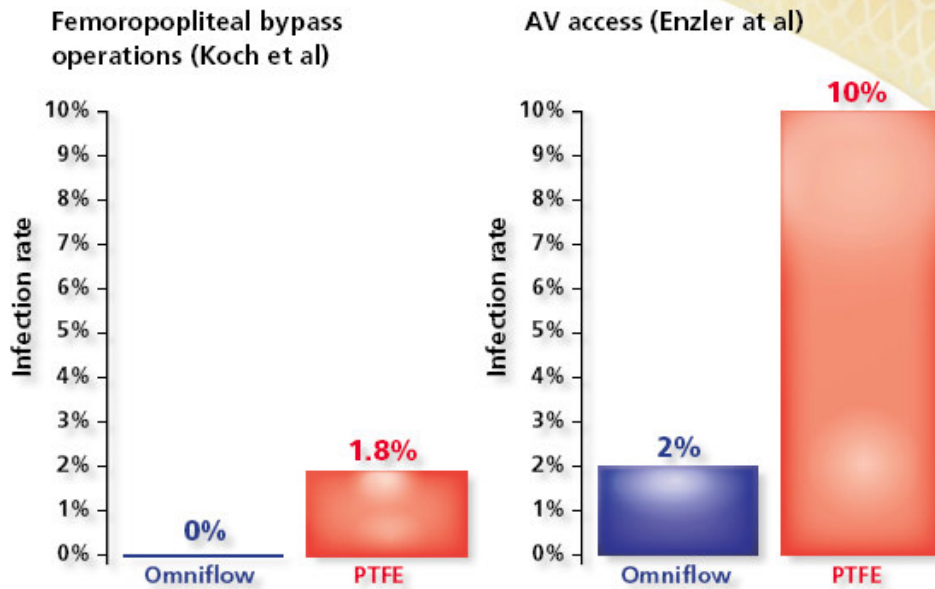
Omniflow demonstrates good patency in arteriovenous access





Resistance to infection

Omniflow demonstrates lower infection rates than PTFE



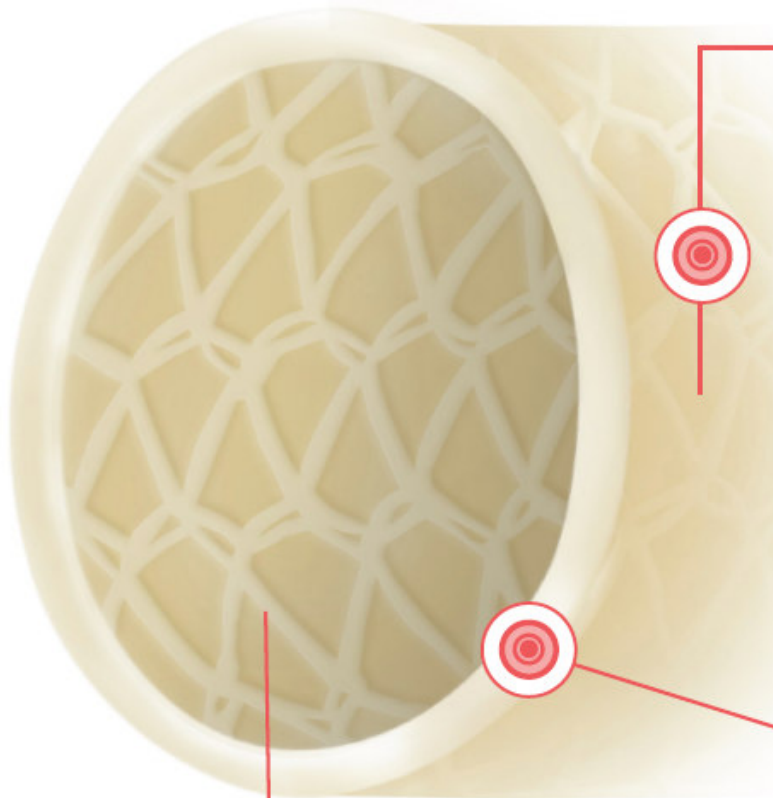
Resistance to aneurysm formation

- Aneurysm formation in 9 patients out of 353 (2.6%) appearing on average 4.8 years after implantation (Amann et al).
- Aneurysm rate in dialysis patients of 0.9% per patient year for Omniflow II compared with 2.4% for PTFE (Wang and Chu).



Omniflow™ II

The Biosynthetic Solution

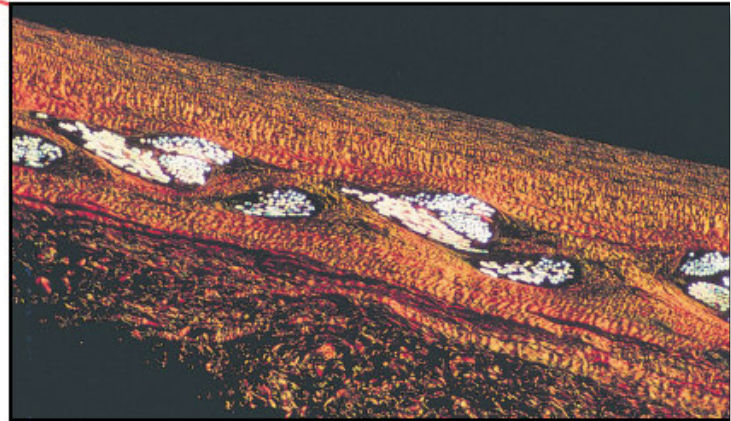


Composite structure

- Omniflow II is a composite of cross-linked of polyester mesh endoskeleton.
- The polyester mesh provides strength and d aneurysm formation.
- The collagen is stabilised, non-antigenic and many years after implantation.
- The collagen structure is biocompatible, wh incorporation into host tissue. This leads to wall, which contributes to resistance to infe
- The wall is impervious to tissue ingrowth in long-term patency.

Flow surface

- Omniflow II is pre-healed, resulting in a haemocompatible flow surface.

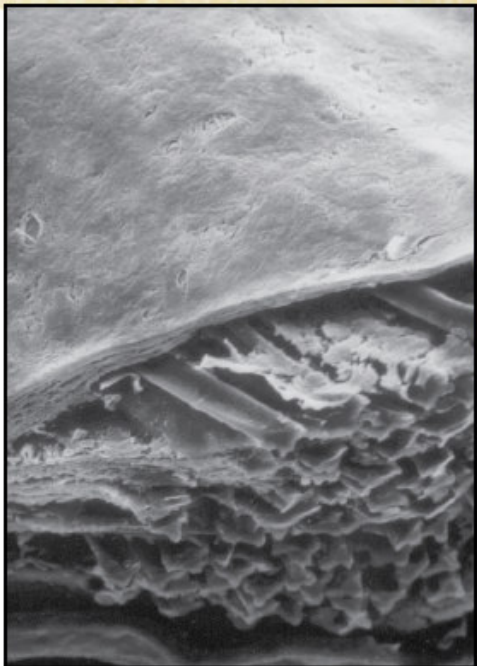


bio nova

More than 25 years of clinical experience
with biosynthetic vascular technology

Omniflow™ II

vine collagen and a
urability, designed to resist
d remains structurally intact
ich encourages rapid
revascularisation of the
ction.
the lumen, assisting



Scanning electron micrograph showing a smooth flow surface of stable biological material, covering the polyester mesh.

Cross section of Omniflow II composite structure showing the polyester mesh integrated with collagen.



Explant after 7 years in the femoro-popliteal position showing no tissue ingrowth and retention of smooth flow surface.



Omniflow™ II

Ease of Handling

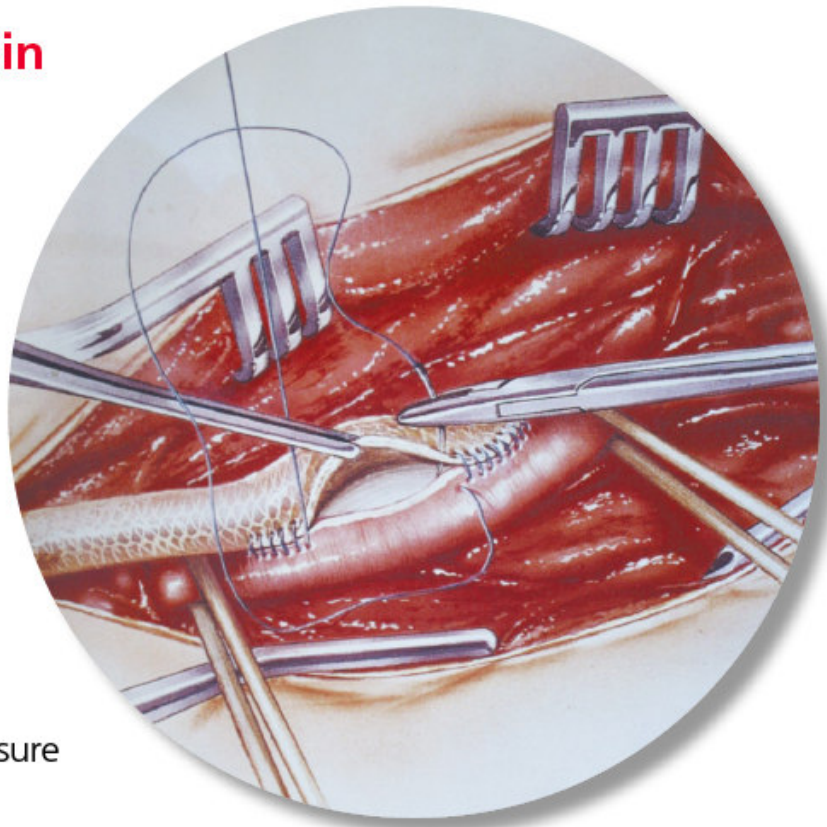


Handles like a saphenous vein

- ✓ Cuts, trims and shapes with ease
- ✓ No need for cuffs or jump grafts at distal anastomosis
- ✓ Minimal suture hole bleeding with standard vascular sutures
- ✓ Excellent suture retention

For AV access

- ✓ Preformed loop prevents kinking
- ✓ Ease of puncturing
- ✓ Rapid haemostasis with minimal pressure



“...characterised by a high patency rate and easy puncturing.”

Genoni M et al.

“...material that stands out for its excellent handling.”

Matticari S et al.



bio nova

Omniflow™ II



References:

Amann W et al. Z Herz- Thorax- Gefäßchir 2000; 14: 113-116.

Enzler M et al. Clin Transplant 1996; 10: 511-515.

Genoni M et al. Helv Chir Acta 1990; 57: 209- 212.

Koch G et al. Zentralbl Chir 1996; 121: 761-767.

Matticari S et al. 2nd World Week of Professional Updating in Surgery and in Surgical and Oncological Disciplines of the University of Milan. University of Milan, Italy, 15-21 July 1990.

Wang and Chu. Artif Organs 1996; 20: 1278-1281.

Omniflow™ II Product Range

Omniflow II Vascular Prosthesis – Straight

For peripheral revascularisation or straight arteriovenous access. Available in diameters of 5, 6 and 8mm and lengths of 20-65cm.

Catalogue numbers	Internal diameter		
Minimum length	5mm	6mm	8mm
65 cm	751-565	751-665	751-865
60 cm	751-560	751-660	751-860
55 cm	751-555	751-655	751-855
50 cm	751-550	751-650	751-850
45 cm	751-545	751-645	751-845
40 cm	751-540	751-640	751-840
35 cm	751-535	751-635	751-835
20 cm	751-520	751-620	751-820

Omniflow II Vascular Patch

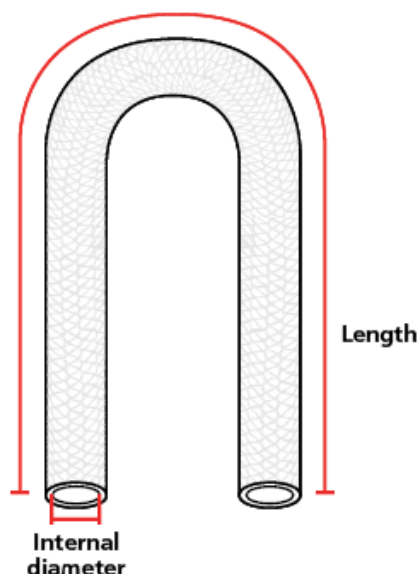
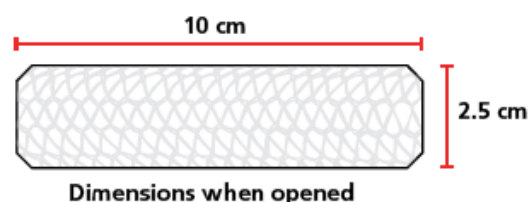
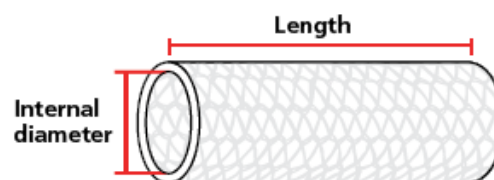
For various requirements in vascular repair, particularly carotid patching. Opening as a 10 x 2.5cm vascular patch.

Dimensions	Catalogue number
10 x 2.5 cm	751-810

Omniflow II Vascular Prosthesis – Curved

For looped arteriovenous access. Available as a preformed loop in diameters of 6 and 8mm and lengths of 30-45cm.

Catalogue numbers	Internal diameter	
Minimum length	6mm	8mm
45 cm	741-645	741-845
40 cm	741-640	741-840
35 cm	741-635	741-835
30 cm	741-630	741-830



Distributor details:



bio nova

Bio Nova International Pty Ltd, North Melbourne, Victoria 3051, AUSTRALIA

Website: www.bionova.com.au Telephone: +61 3 9326 6955 Facsimile: +61 3 9329 8071 BN 9-6(0)-1

24287